



# A Brief Overview of Coffee and Mango Production in Haiti



By Ron Savage, June 2011

# Haiti Background

- Haiti's population is predominantly poor and agrarian
- Most farms are less than 1 ha in size
- Much of the topography is mountainous
- Soils are relatively infertile and erosion prone
- The rainy season is April - October
- The climate is tropical
- Rural infrastructure (roads & irrigation systems) are in poor condition
- Natural disasters e.g. hurricanes, are frequent
- Government services are weak
- Land tenure is weak

# Haiti Agriculture Background

	1979-1981	1989-1991	1999	2000	2001	2002
Major exports (percent share in agriculture)						
Cocoa beans	6.9	4.3	10.3	9.2	17.6	28.0
Mangoes	1.3	14.0	29.4	34.5	26.3	27.4
Coffee, green	76.6	60.3	38.1	33.8	28.2	17.2
Major imports (percent share in agriculture)						
Rice, milled	6.2	16.1	21.3	22.2	18.8	20.8
Wheat	26.9	9.3	3.0	4.5	5.5	8.7
Sugar, raw centrifugal	0.0	1.0	5.2	7.6	6.6	6.3

- Export crops have had mixed results
- Cotton and Sugarcane have fizzled
- Farmer associations have had mixed results
- Pressure on tree crops for fuel wood and fodder
- Competition with short cycle cash crops

# Coffee Production in Haiti

- Micro-holder production (150,000 producers)
- Low production/ha
- Often grown in mixed associations
- 50% of tree cover associated with coffee
- Disease problems (borer and rust)
- Most consumed locally
- 26% exported to Dominican Republic
- 10-12% legally exported to USA and Europe

# HAITI

## Coffee Sector Map

**LEGEND**

- Main Coffee growing areas
- River
- Airport
- Sea Port
- Capital City
- Final processing center
- Coffee growing/Trading community
- Laboratory
- Coffee-Trading Sea Port

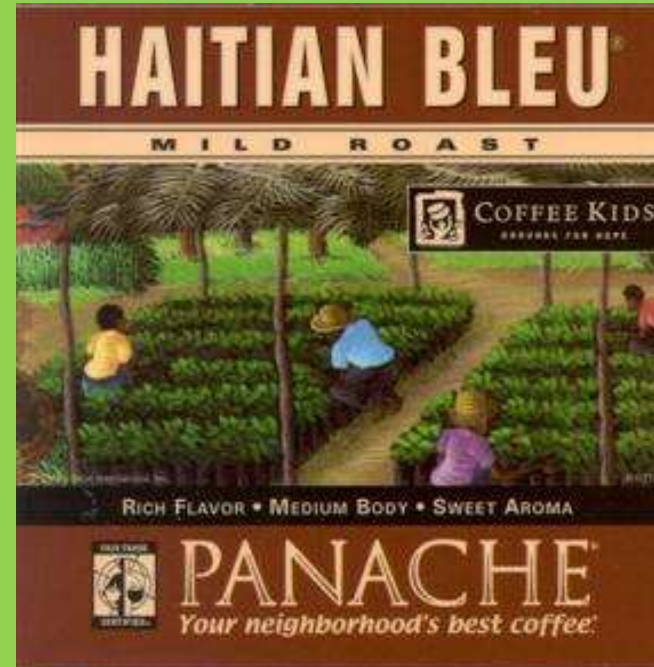


0 10 20 30 Miles

This map, prepared by the Inter-American Development Bank, has not been approved by any competent authority and its inclusion in the loan document has the exclusive objective of indicating the area of influence of the project proposed for financing.



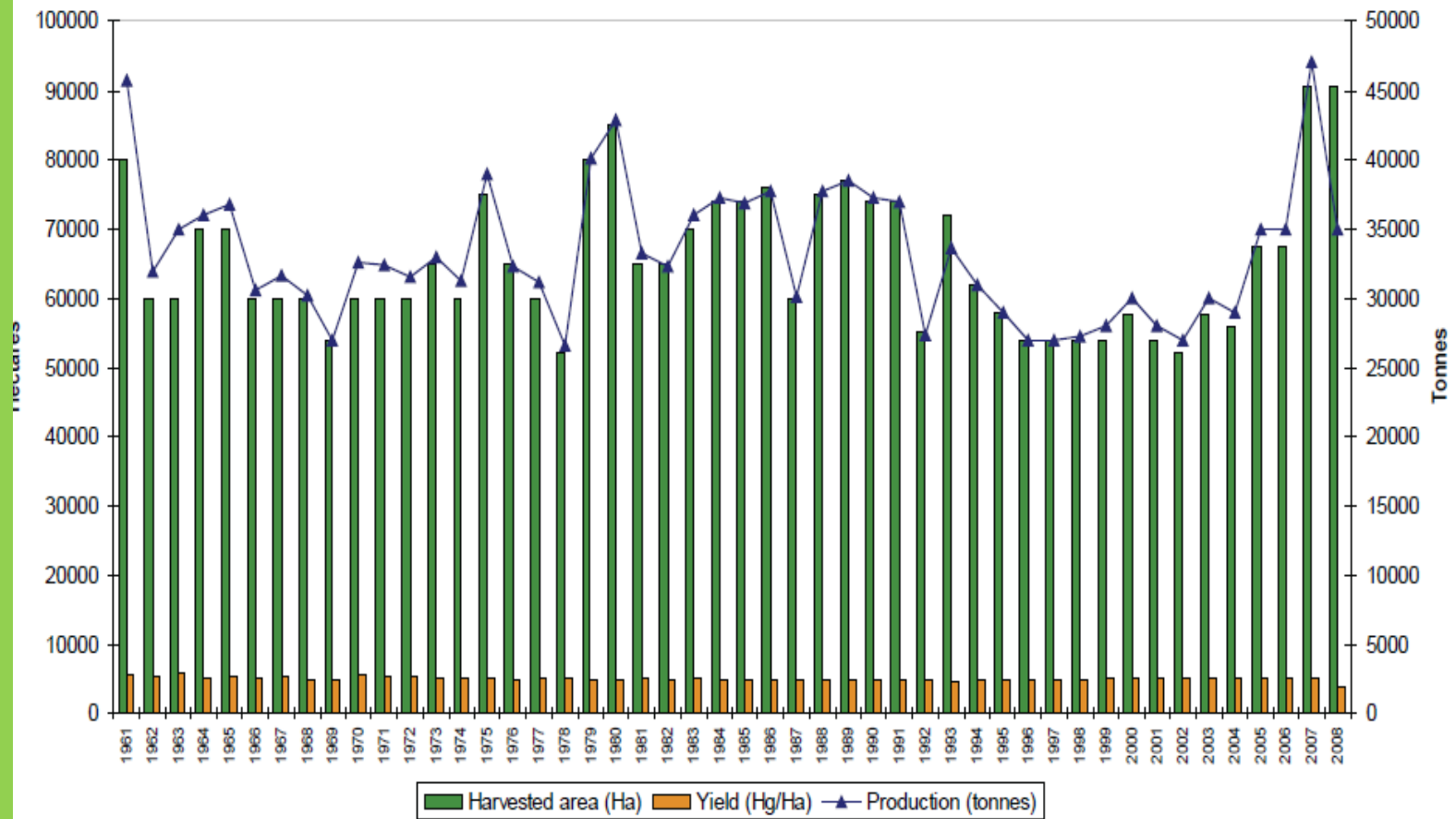
**New Initiatives:**  
Organic,  
Fair Trade,  
Mountain grown,  
Select coffee,  
Patented



# Coffee - From exporter to importer

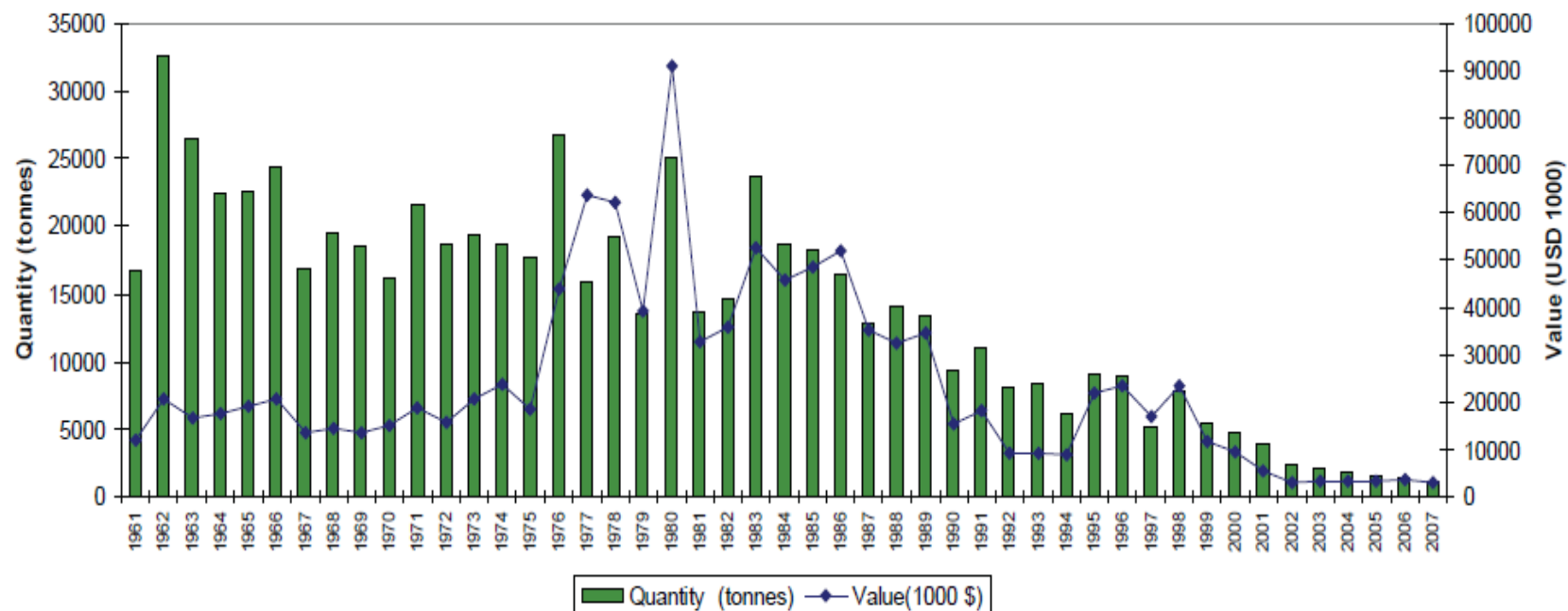


**Figure 2. Coffee production**



Source: FAO (2010).

**Figure 3. Haitian coffee exports**



Source: FAO (2010).

Less than 5 percent of total production corresponds to washed coffee. Fifty-nine percent to 65 percent of total production is consumed locally, 10 percent to 12 percent is legally exported (whether as natural coffee or washed coffee) and 26 percent to 28 percent is exported informally to the Dominican Republic.

# Coffee Production Constraints

- Low world prices
- Low production per ha
- Poor processing, mostly dry
- Increasing local demand for low quality coffee saps incentive to aim for high value foreign markets
- Road access in mountainous areas

# Coffee Production Opportunities

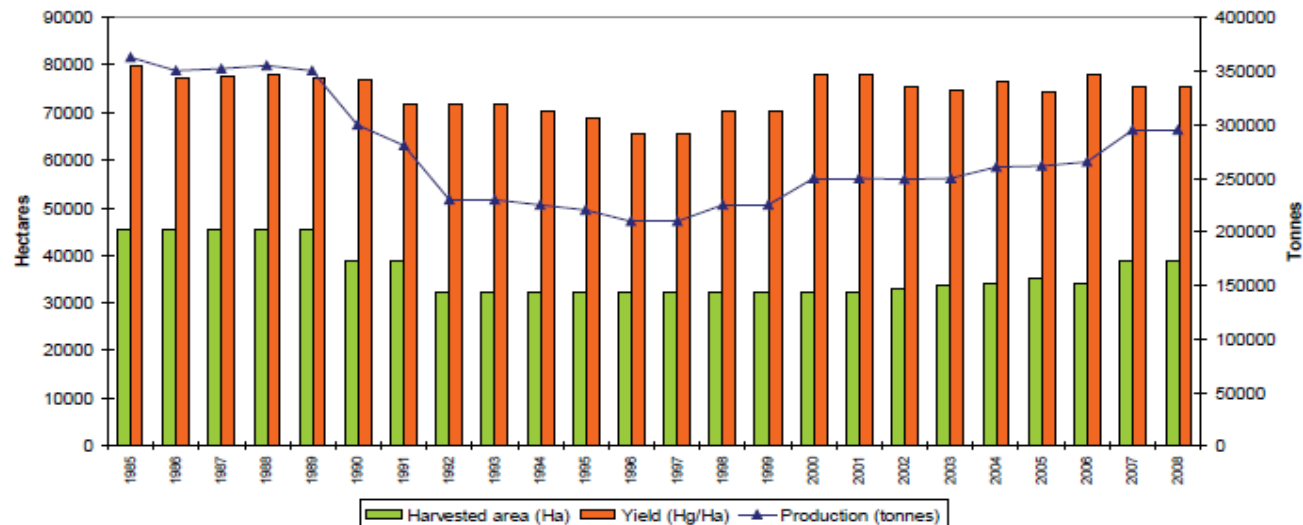
- Niche market coffees – Haiti Bleu
- Renew old plantations and plant new ones
- Public sympathy for Haiti
- Improve processing
- [Haitian coffee video](#)
- Planting coffee for watershed protection
- Carbon offset

# Haitian Mango Production

## 3 RELEVANCE OF MANGO IN HAITI

Mango is the principal fruit grown in Haiti. According to FAO (2010), Haiti was among the top ten mango producing countries in the world until the late 1980's, and was also one of the top ten mango exporting countries until the early 1990's.

**Figure 1. Mango production (FAO, 2010)**



# Mango Value Chain

- Producers
  - Large 2-10 ha with technology package for export
  - Med. < 2 ha, associated, little tech. use
  - Small – few trees, un-associated, little tech.
- Yields 5- 75 dozen/tree year
- ASPVEFS/JMB works in south
- Production is often sold to middlemen (volitiguer)
- Only 20% exported, mostly to USA

# Madame Francisque Mango



Haitian variety – top grafted on other varieties

Madame Francis only mango approved by USDA for importation into USA

Must be hot water treated to kill fruit fly eggs & larva

# Mostly grown small-scale



# Mango Processing



# Mango – fruit fly management

- Traps for monitoring FF population levels
- Spraying of trees
- Waste collection
- Burning infested mangoes
- Intensification of IPM during the ripening period
- Breeding pigs in remote areas of operation
- Support for detection following an approach of correlation between the level of capture and the amount of infected mango

# Mango Production Constraints

- Mostly small holders
- Fruit fly infestation a huge problem
- Economies of scale – Lack of Francisque mango, farm size
- Mango orchard management
- Harvest losses – approx. 50% and higher
- Transportation issues
- Export barriers – Hot water treatment

# Mango Support Projects

- Mouvan Moun Mango – Organic fair trade mangoes marketed through Whole Foods
- Haiti Hope Project – Coca Cola, IDB, Technoserve and GOH markets Odwalla Brand mango juice products.
- JMB – with support from CHP and USAID
- ORE- Grafting and drying

# Mango Production Opportunities

- Expand production
- More training
- Orchard management
- Dried Mango
- Frozen Mango
- Larger orchards
- Increasing demand
- [Mango Production in Haiti video](#)



# Coffee – Optimal agroforestry production system in Costa Rica



Tree crops have enormous potential to improve livelihoods while stabilizing watersheds



Haiti from the air